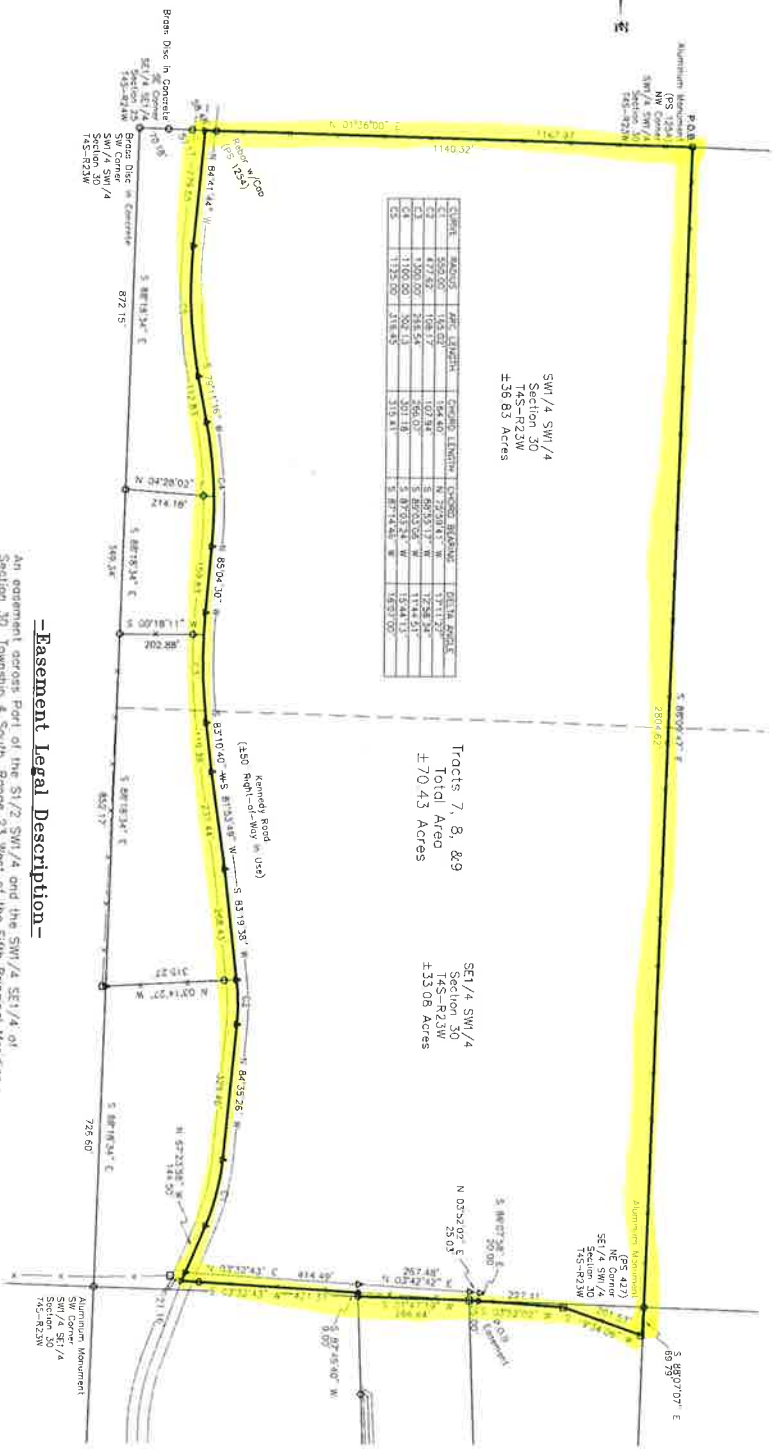




SECTION	ACRES	FRAC. ACRES	CHANG. EXTENSION	CHANG. AREA	NET AREA
SW 1/4	40.00	100.00%	164.40	1711.72	1711.72
SE 1/4	40.00	100.00%	164.40	1711.72	1711.72
SW 1/4	40.00	100.00%	164.40	1711.72	1711.72
SE 1/4	40.00	100.00%	164.40	1711.72	1711.72
SW 1/4	40.00	100.00%	164.40	1711.72	1711.72
SE 1/4	40.00	100.00%	164.40	1711.72	1711.72
SW 1/4	40.00	100.00%	164.40	1711.72	1711.72
SE 1/4	40.00	100.00%	164.40	1711.72	1711.72
SW 1/4	40.00	100.00%	164.40	1711.72	1711.72
SE 1/4	40.00	100.00%	164.40	1711.72	1711.72
SW 1/4	40.00	100.00%	164.40	1711.72	1711.72
SE 1/4	40.00	100.00%	164.40	1711.72	1711.72
SW 1/4	40.00	100.00%	164.40	1711.72	1711.72
SE 1/4	40.00	100.00%	164.40	1711.72	1711.72
SW 1/4	40.00	100.00%	164.40	1711.72	1711.72
SE 1/4	40.00	100.00%	164.40	1711.72	1711.72
SW 1/4	40.00	100.00%	164.40	1711.72	1711.72
SE 1/4	40.00	100.00%	164.40	1711.72	1711.72
SW 1/4	40.00	100.00%	164.40	1711.72	1711.72
SE 1/4	40.00	100.00%	164.40	1711.72	1711.72
SW 1/4	40.00	100.00%	164.40	1711.72	1711.72
SE 1/4	40.00	100.00%	164.40	1711.72	1711.72
SW 1/4	40.00	100.00%	164.40	1711.72	1711.72
SE 1/4	40.00	100.00%	164.40	1711.72	1711.72
SW 1/4	40.00	100.00%	164.40	1711.72	1711.72
SE 1/4	40.00	100.00%	164.40	1711.72	1711.72
SW 1/4	40.00	100.00%	164.40	1711.72	1711.72
SE 1/4	40.00	100.00%	164.40	1711.72	1711.72
SW 1/4	40.00	100.00%	164.40	1711.72	1711.72
SE 1/4	40.00	100.00%	164.40	1711.72	1711.72
SW 1/4	40.00	100.00%	164.40	1711.72	1711.72
SE 1/4	40.00	100.00%	164.40	1711.72	1711.72
SW 1/4	40.00	100.00%	164.40	1711.72	1711.72
SE 1/4	40.00	100.00%	164.40	1711.72	1711.72
SW 1/4	40.00	100.00%	164.40	1711.72	1711.72
SE 1/4	40.00	100.00%	164.40	1711.72	1711.72
SW 1/4	40.00	100.00%	164.40	1711.72	1711.72
SE 1/4	40.00	100.00%	164.40	1711.72	1711.72
SW 1/4	40.00	100.00%	164.40	1711.72	1711.72
SE 1/4	40.00	100.00%	164.40	1711.72	1711.72
SW 1/4	40.00	100.00%	164.40	1711.72	1711.72
SE 1/4	40.00	100.00%	164.40	1711.72	1711.72
SW 1/4	40.00	100.00%	164.40	1711.72	1711.72
SE 1/4	40.00	100.00%	164.40	1711.72	1711.72
SW 1/4	40.00	100.00%	164.40	1711.72	1711.72
SE 1/4	40.00	100.00%	164.40	1711.72	1711.72
SW 1/4	40.00	100.00%	164.40	1711.72	1711.72
SE 1/4	40.00	100.00%	164.40	1711.72	1711.72
SW 1/4	40.00	100.00%	164.40	1711.72	1711.72
SE 1/4	40.00	100.00%	164.40	1711.72	1711.72
SW 1/4	40.00	100.00%	164.40	1711.72	1711.72
SE 1/4	40.00	100.00%	164.40	1711.72	1711.72
SW 1/4	40.00	100.00%	164.40	1711.72	1711.72
SE 1/4	40.00	100.00%	164.40	1711.72	1711.72
SW 1/4	40.00	100.00%	164.40	1711.72	1711.72
SE 1/4	40.00	100.00%	1711.72	1711.72	



Tracts 7, 8, & 9
Total Area
±70.43 Acres

Section 30
145-R23W
±13.08 Acres

Section 30
145-R23W
±10.19 Acres

-Surveyor's Notes-

Beings of Bearings for this survey is Grid North Based on GPS Observations. This survey is based on documents as provided by the client and does not include a title search by the Surveyor. A thorough search of the records was made and it may be noted, however, there may exist other documents of record that may affect this parcel.

All visible encroachments as of the date of this survey are shown hereon.

-Legend-

- - Found Mon as Noted
- - Set 1/2" Rebor w/Cop PS 1491
- △ - Computed Point
- ▲ - Set PK Nail
- - Fence Corner

-Certification-

I, the undersigned, being duly sworn, do hereby certify that the above described land has been surveyed under my direct supervision. All corners marked on above plat or documents with existing monuments found in the vicinity of the corners are as shown on the plat and are correct. This survey is for and to the parties shown hereon. This survey is void only if the original plat and signature of surveyor.

-Easement Legal Description-

An easement across Part of the S1/2 SW1/4 and the SW1/4 SE1/4 of Section 30, Township 4 South, Range 23 West of the Fifth Principal Meridian, being located in Montgomery County, Arkansas, and being more particularly described as follows:

Commencing at an Aluminum Monument for the NW Corner of Said S1/2 SW1/4, Thence S 88°09'47" E, 2804.62 feet to an Aluminum Monument for the NE Corner of Said S1/2 SW1/4, Thence S 88°07'07" E, 69.79 feet along the North Line of Said SW1/4 SE1/4, Thence S 03°52'06" W, 201.53 feet along a Fence to a Fence Corner, Thence S 03°52'02" W, 227.41 feet along a Fence to a Fence Corner on the East Line of Said S1/2 SE1/4 and the Point of Beginning, Thence S 01°47'19" W, 266.64 feet to a Rebor w/Cop on the East Line of Said S1/2 SW1/4, Thence S 87°45'40" W, 9.00 feet to a Rebor w/Cop in a Fence, Thence S 03°52'43" W, 421.37 feet to the Centerline of Kennedy Road, Thence N 67°23'58" W, 21.16 feet, Thence N 03°52'43" E, 414.49 feet, Thence N 03°42'42" E, 267.48 feet, Thence N 03°52'02" E, 29.03 feet, Thence S 86°07'58" E, 20.00 feet to a Fence ±0.56 Acres more or less and being subject to any and all covenants, easements, and restrictions of record.



Scale is for 1" = 12" Drawn
State Land Surveyor's Plat Filing Code: 500-065-23W-0-20-203, 4/1/2021

Boundary Survey
Part of the S1/2 SW1/4 and
SW1/4 SE1/4
Section 30, T4S-R23W
Montgomery County, Arkansas

Prepared for
Fowler Auctioneers, Inc.

Black Land Services, Inc.
Evan G. Black, FS
P.O. Box 289, Royal, Arkansas 71968
(501) 622-9859

Legal Description-

A tract of land being situated in the S1/2 SW1/4 and the SW1/4 SE1/4 of Section 30, Township 4 South, Range 23 West of the Fifth Principal Meridian, being located in Montgomery County, Arkansas, and being more particularly described as follows:

Beginning at an Aluminum Monument for the NW Corner of Said S1/2 SW1/4, Thence S 88°09'47" E, 2804.62 feet to an Aluminum Monument for the NE Corner of Said S1/2 SW1/4, Thence S 88°07'07" E, 69.79 feet along the North Line of Said SW1/4 SE1/4, Thence S 03°52'06" W, 201.53 feet along a Fence to a Fence Corner, Thence S 03°52'02" W, 227.41 feet along a Fence to a Fence Corner on the East Line of Said S1/2 SE1/4 and the Point of Beginning, Thence S 01°47'19" W, 266.64 feet to a Rebor w/Cop on the East Line of Said S1/2 SW1/4, Thence S 87°45'40" W, 9.00 feet to a Rebor w/Cop in a Fence, Thence S 03°52'43" W, 421.37 feet to the Centerline of Kennedy Road, Thence N 67°23'58" W, 21.16 feet, Thence N 03°52'43" E, 414.49 feet, Thence N 03°42'42" E, 267.48 feet, Thence N 03°52'02" E, 29.03 feet, Thence S 86°07'58" E, 20.00 feet to a Fence ±0.56 Acres more or less and being subject to any and all covenants, easements, and restrictions of record.